



NUTANIX

High Speed Graphics Meets Web-Scale Software Defined Infrastructure

Paul Serrano

Senior Director Marketing, APJ

10 July 2014

Why Move Power Graphics to new Infrastructure?

Legacy Platform

- Typically bare metal
- Dedicated, single – purpose
- Zero Leverage

INTEGRATED PRIVATE CLOUD

Provision compute, storage and networking into single entity at a granular level (VM)

SECURITY & MULTI-TENANCY

Keep data separate for different business units via a software defined infrastructure

MANAGEABILITY

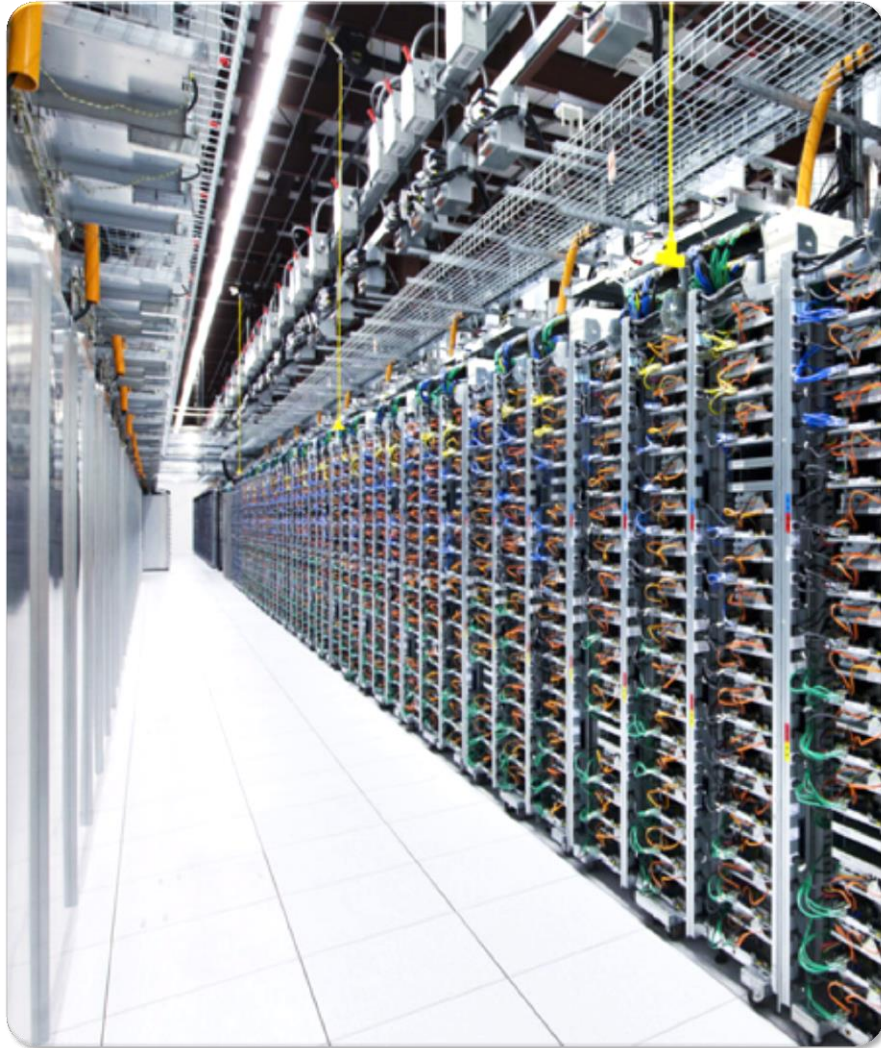
Use the same monitoring and management tools you know and love

ELASTICITY

Reclaim power, cooling, and rack space and use & buy only what you need, when you need it.

Web-scale Datacenters Are Simple, Scalable & Efficient

Best Practices for Mainstream Enterprises



Design Goals

- No single point of failure
- No single point of bottleneck
- **Always-on** systems
- Deep **Analytics** across all SW/HW components
- Interactive **visualization** of entire datacenters

Fundamental Assumptions

- Unbranded x86 servers: **fail-fast** systems
- No special purpose appliances
- All intelligence and services in software
- Linear, predictable **scale-out**



Web-Scale IT at any Scale - with Nutanix



- ✓ Founded in 2009
 - ✓ Now on fourth gen of Nutanix OS
- ✓ Core team from industry leaders
 - ✓ Strong background in distributed system and enterprise architectures
- ✓ Great customer adoption
 - ✓ Hundreds of customers world wide Including Global 500 organizations
 - ✓ Global support and enterprise services

Web-Scale Converged Infrastructure is Proving to be Even More Effective in the Enterprise

“50 per cent of global enterprises will be taking an architectural approach to web-scale IT by 2017”

- Gartner 03/10/2014

Asia Pacific Customers



The “Google Like” approach is now Available to the Enterprise

Virtual Computing Platform

Compute



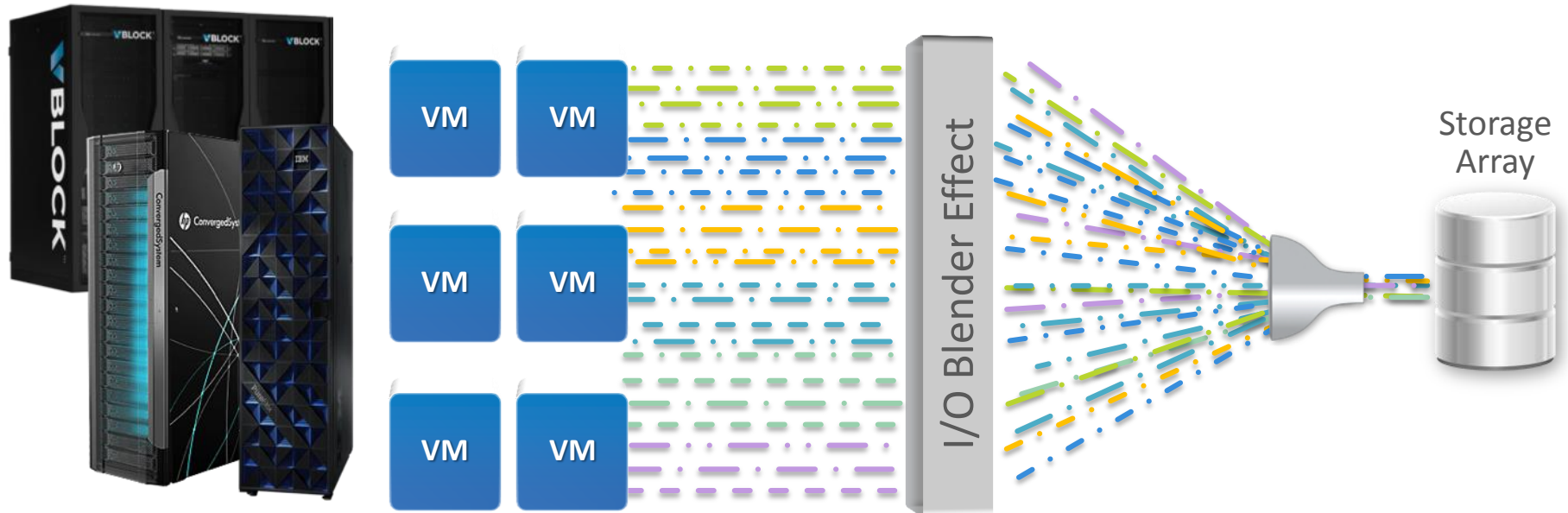
Compute + Storage

Storage



- ✓ Predictable Scale
- ✓ High Availability
- ✓ Efficiency
- ✓ Simplicity

Traditional Architecture: Complexity is the Enemy of Uptime



Diminished Performance

- I/O bottleneck at storage controller
- Placing flash in the array underutilizes faster media

Inflexible Scalability

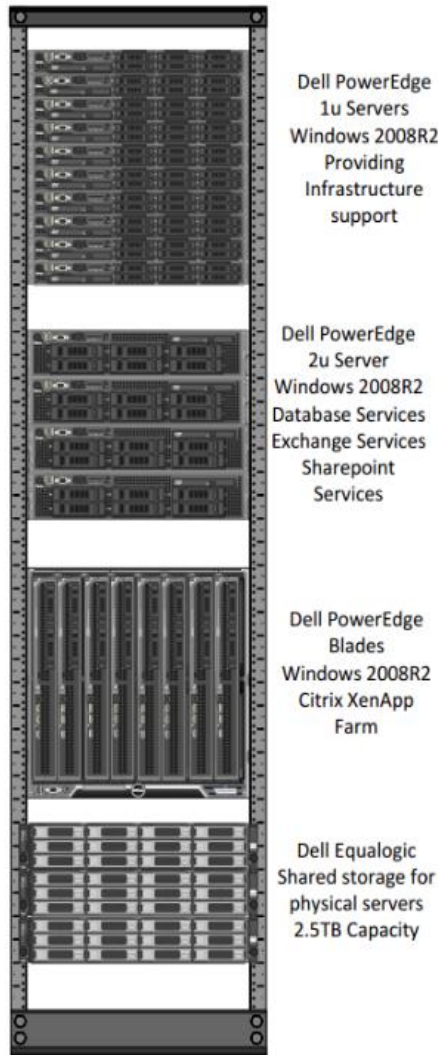
- Must buy capacity ahead of need
- Fork lift upgrades required over time

Complex Management

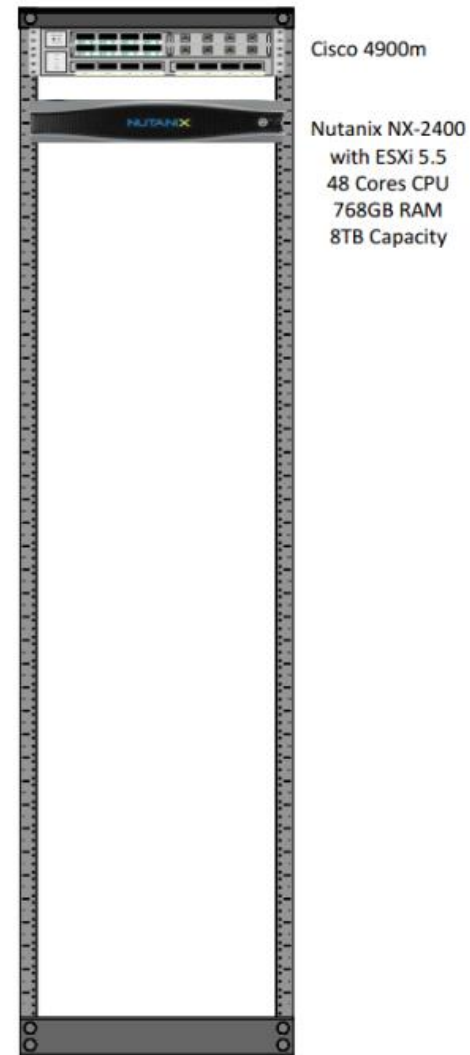
- Need for specialized iSCSI, FC, NFS skills
- Data management policies lack context

Collapsing the Datacenter – Software Defined

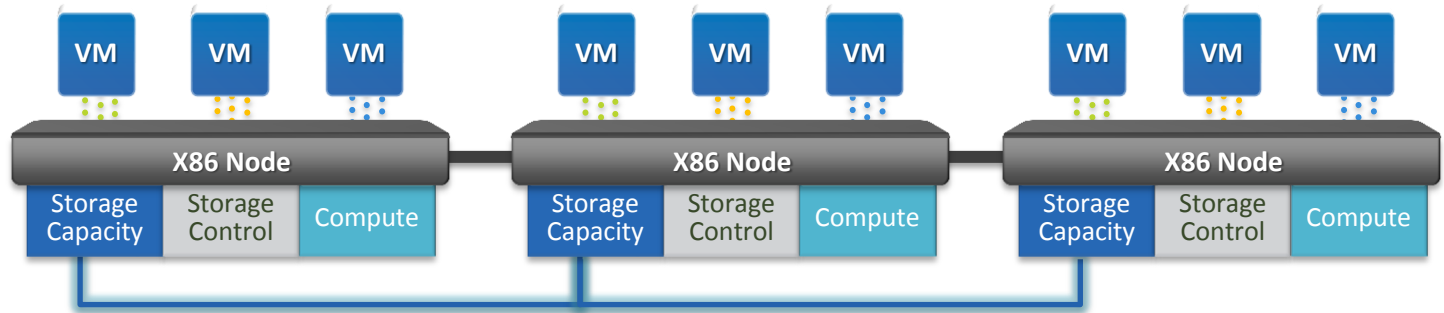
Before – All Physical Hosts



After with
VMware and
Nutanix



Disruptive Web-Scale Architecture



BEST PERFORMANCE

- Convergence eliminates bottlenecks
- Linear performance at scale
- Localization, Auto Tiering, Compression, Deduplication

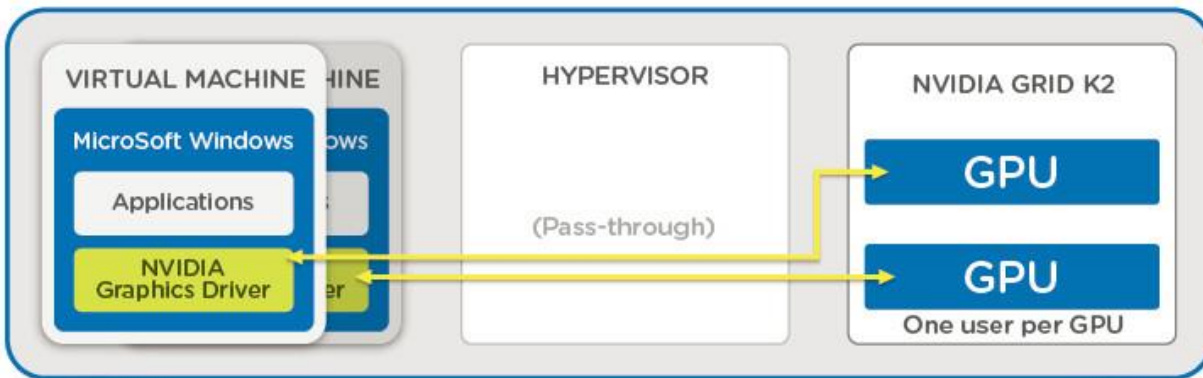
OPTIMAL SCALABILITY

- Scale one node at a time
- Cluster expansion with zero downtime
- Hypervisor Agnostic – Vshpere, Hyper-V, KVM

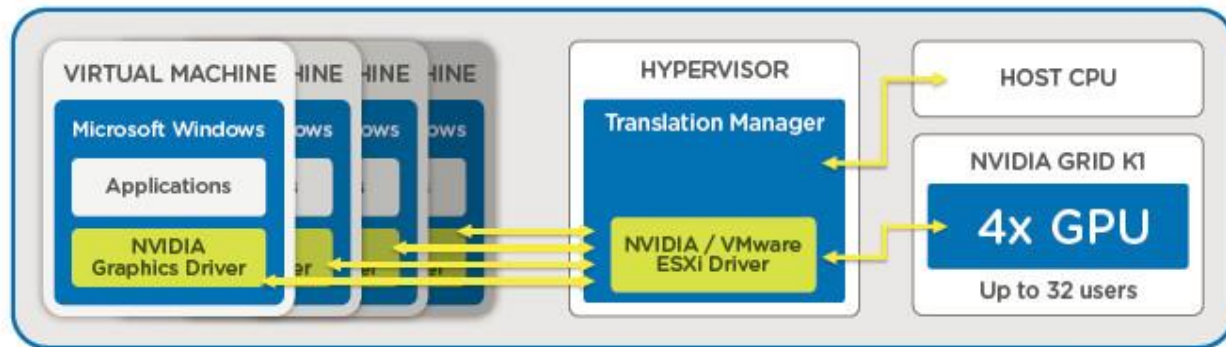
HIGHLY RELIABLE

- No single point of failure
- Self healing
- VMcaliber

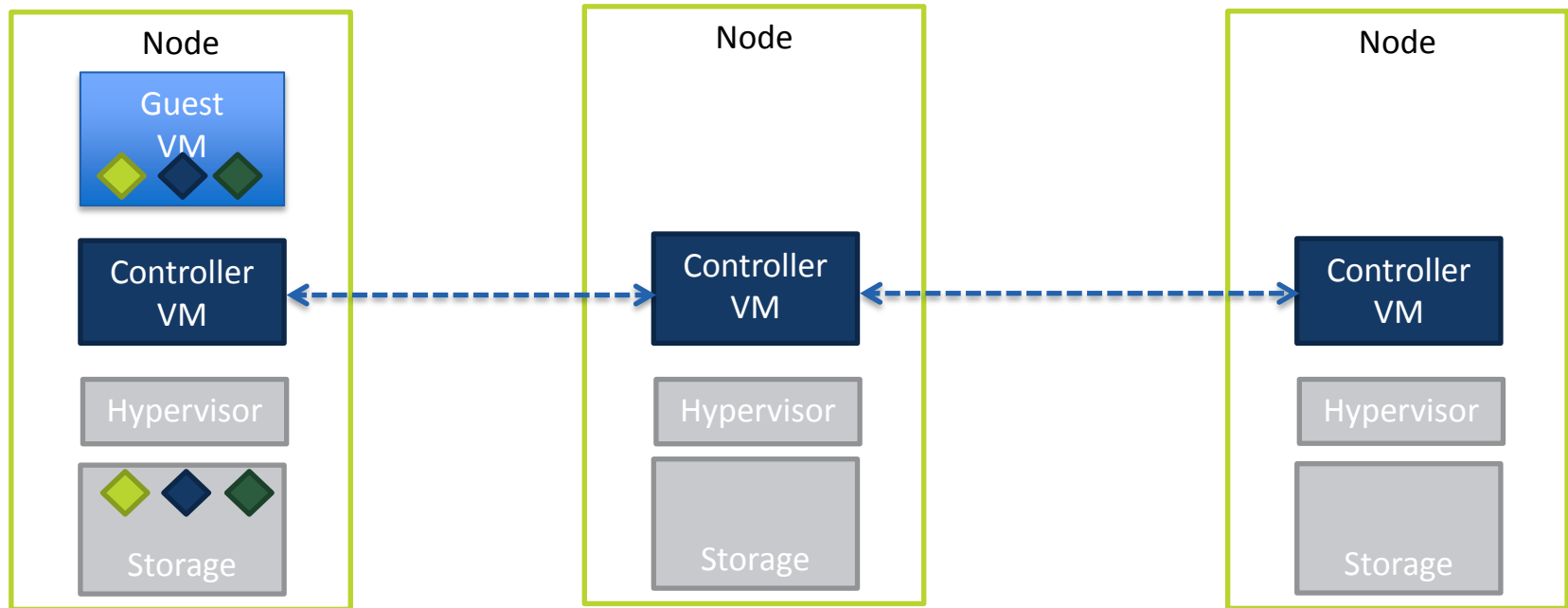
Dedicated GPU Pass-through (vDGA)



Virtual Shared Graphics Acceleration (vSGA)



Write I/O Technique

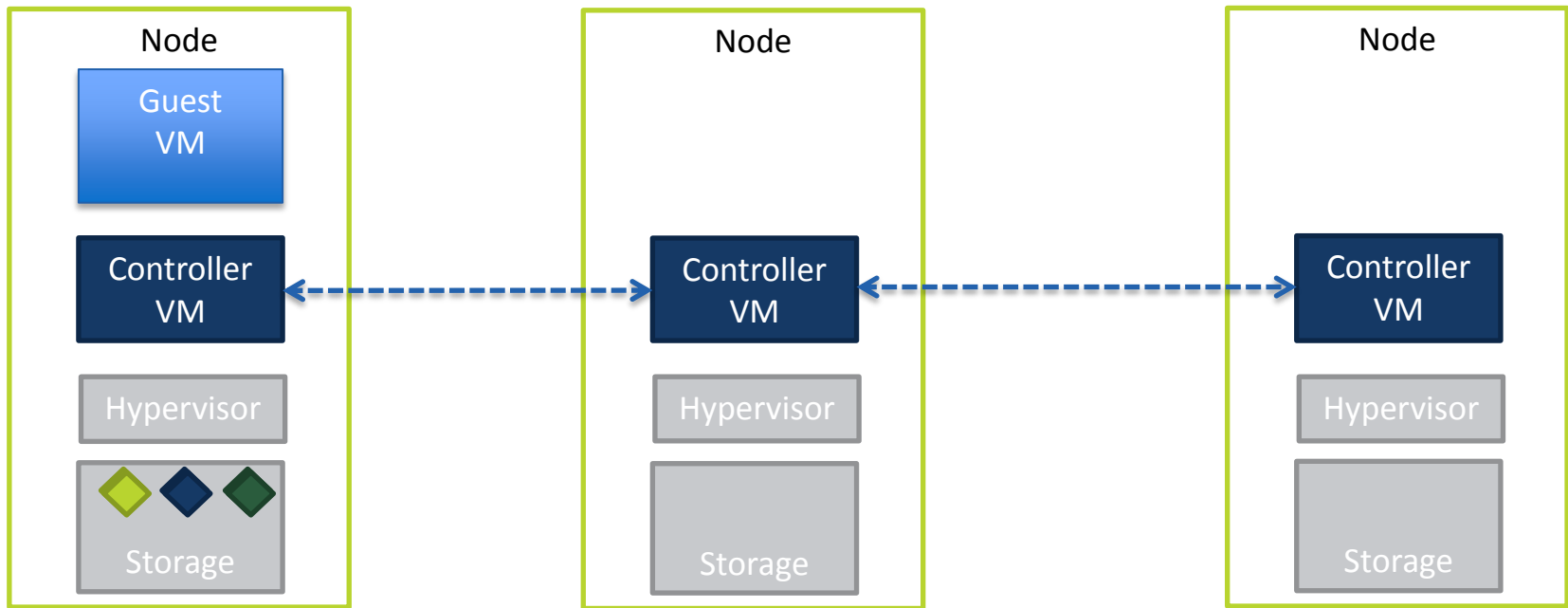


Data is written locally

Replicated on other nodes for high availability

Replicas are spread across cluster for high performance

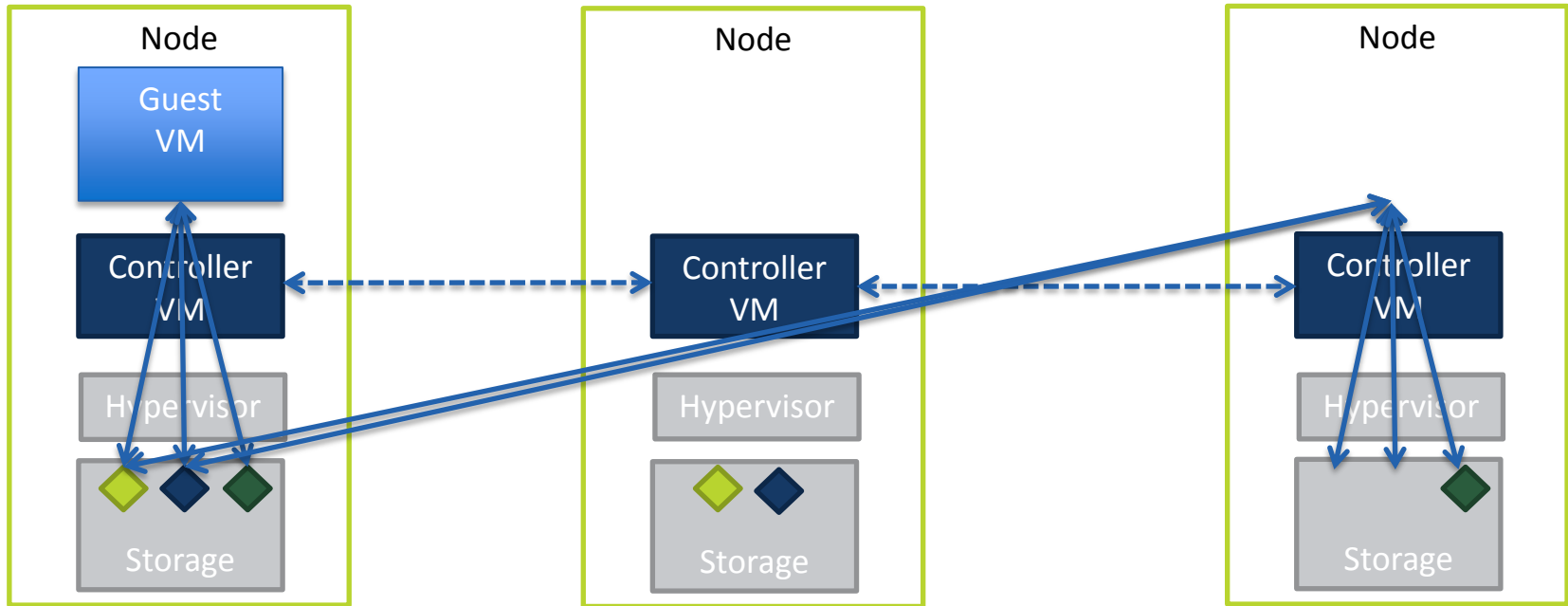
Read I/O Technique



Data is read locally

Remote access only if data is not locally present

Support for vMotion and DRS



Metadata service can access data from anywhere
Locality improves over time

High Density Virtualization

Clustering simplified

Storage

- 8x 400GB SSDs
- 16x 1TB HDDs
- 4x virtualized storage controllers

* Data based on NX-3450

Compute

- 4x Independent server compute nodes
- 8x Intel CPUs (64 cores)
- Up to 1TB of RAM
- Dual 10Gbit Ethernet

4 Nodes in 2U

4 Independent Compute/Storage Nodes



Nutanix Extensible Platform with GPU + APEX

Centralizing | Mobilizing | Virtualizing - Desktops



NX-7110 Platform

- ✓ 100% SW-defined solution offers rapid time to market for new capabilities
- ✓ 3x PCIe slots offer multiple configs of Nvidia K1, K2 and Teradici APEX cards
- ✓ Supports the most graphics intensive users within a single virtualized solution
- ✓ Plugs into existing environment to run multiple business applications in parallel

High performance VDI delivery for ALL applications & services

- Video Streaming
- CAD Design
- Geospatial Apps
- 3D Rendering Apps

NX-7110 HW Overview



NX-7110 (1 node per appliance)

Compute	20 cores 2.8 GHz (Ivy Bridge)
Flash capacity	2x 400GB
Memory	128GB RAM (base) 256GB RAM (max)
PCIe Expansion	3 slots (supporting K1, K2, APEX)
HDD capacity	6x 1 TB
Networking	2x 10GE, 2x 1GE



GRID K1



GRID K2

GPU/APEX Configurations

3x K2

2x K2

2x K2 + 1x APEX

1x K1

2x K1

2x K1 + 1x APEX

Mixed configurations of K1 & K2
will not be supported

Additional configurations may be
supported based on customer demand



Different Platforms to Meet Your Needs

Meeting Different Price/Performance Requirements

NX-1000



- 40% lower price point
- Balanced resources for branch office, retail stores, & remote offices
- Power and space savings up to 80%
- Single management interface

NX-3000



- Fastest performance for compute-intensive workloads (e.g. VDI)
- Expanded flash capacity for large working sets
- Highest supported VM density

NX-6000




- Ideal for data-intensive applications
- 3x more storage capacity than general purpose offering
- 2x server flash capacity for large working sets

NX-7000



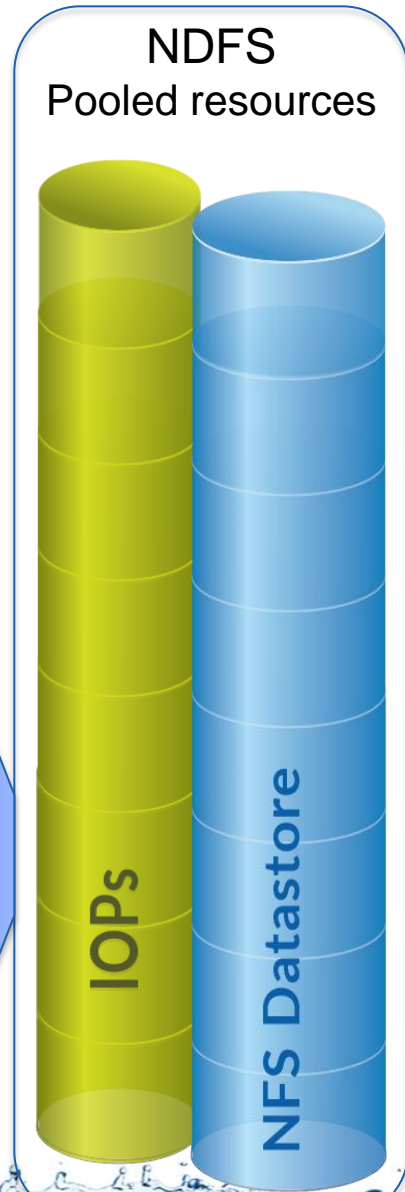
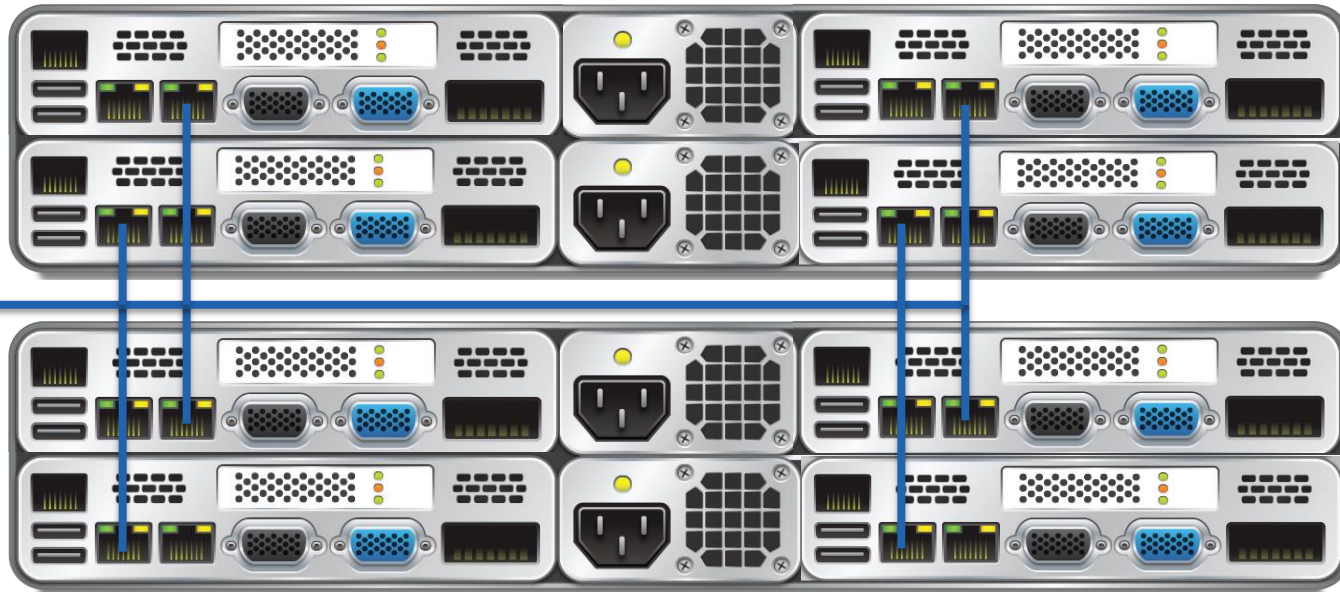
- GPU and PCoIP offload seamlessly integrates graphics intensive users in VDI deployments
- Ideal for any user currently running workstations with GPU cards installed

Scale Out



SINGLE NODE
Compute: 16 Cores
Storage:
Flash: 800GB SSD
HDD: 4TB
Controller: Nutanix Storage controller

10Gbps Ethernet



Langs Building Supplies Demolishes IT Infrastructure Costs by 53% with Nutanix

Company Background

Langs Building Supplies, based in Stapylton, Queensland in Australia, is a supplier of timber and hardware products and a fabricator of roof trusses, wall frames, floor systems as well as operating a door and aluminium windows joinery for the construction industry. Langs is privately owned and has about 250 employees.

Virtualize Everything



53% Lower TCO

The Virtual Computing Platform now hosts all business-critical applications, including ERP, SQL Servers, web servers, content filtering, human resources, payroll and VMware Horizon View. All task, power and design users access Windows desktops running in Horizon View, mostly with thin clients. A branch office 100 km away from the main site in Stapylton accesses desktops over a wide-area network.



Industry

Building Construction

Business Needs

Virtualized server and storage infrastructure to host business-critical applications and virtual desktops for all task, power and design users.

Solution

- Nutanix NX-3000 and NX-7000 Series
- VMware Horizon View

Benefits

- Virtual desktop performance fast enough for 3D CAD users
- 96% reduction in power costs
- 83% reduction in rack space
- 53% lower TCO than alternative solutions
- Save 350,000 AUD in 5 years on staffing
- Better security and availability with linear scalability

Lang's Key Statistics

- 64 RU to 6 RU
(3 Racks to ½ Rack)
- 2x NX7110 + 1x NX3000
- Replaced 2 SAN's
- 54 Amps to 8 Amps
- 53% Lower TCO
- 145 VM's
- Local and Remote Users
- 3D CAD – Autodesk
- SQL, ERP, Website, etc
- ESXI 5.5
- Boot Storm 100 Desktops
without any effect

“The system’s resiliency was immediately apparent when it lost power during a massive storm. “Over 100 VMs were running, and the whole thing was back up and running in 20 minutes. It’s a very resilient solution,” – Matthew Day

“In terms of IT Infrastructure, I can stand up a new site in less than a day with Nutanix. I’d challenge anyone to do that with traditional technologies”.

- Matthew Day
IT Manager, Langs Building Supplies





→ Home

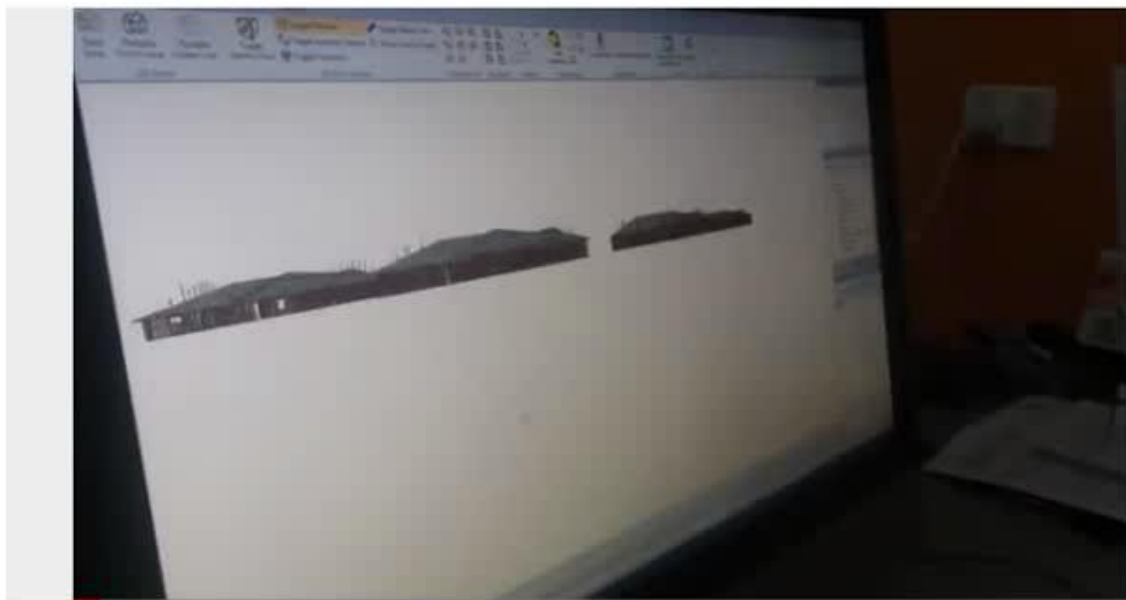


Nutanix 7110 node with K1 vSGA user quick demo

Page on YouTube | Updated 4 months ago
<http://www.youtube.com/watch?v=-FTkqgnXAs8>

Share

Follow



Simple demo from VDI user running 3D app using Nutanix/Horizon. Application shown is MiTek Sapphire (www.mitek Sapphire.com.au)

Related Content

Autodesk 2011/2012 Direc...
Published 5 months ago

RemoteFX vGPU Setup and...
Published 5 months ago

Langs-SMS
Uploaded about 18 hours ago

Image Vandaag 07:21:45
Uploaded about 14 hours ago

Add: File Note Link

Followers



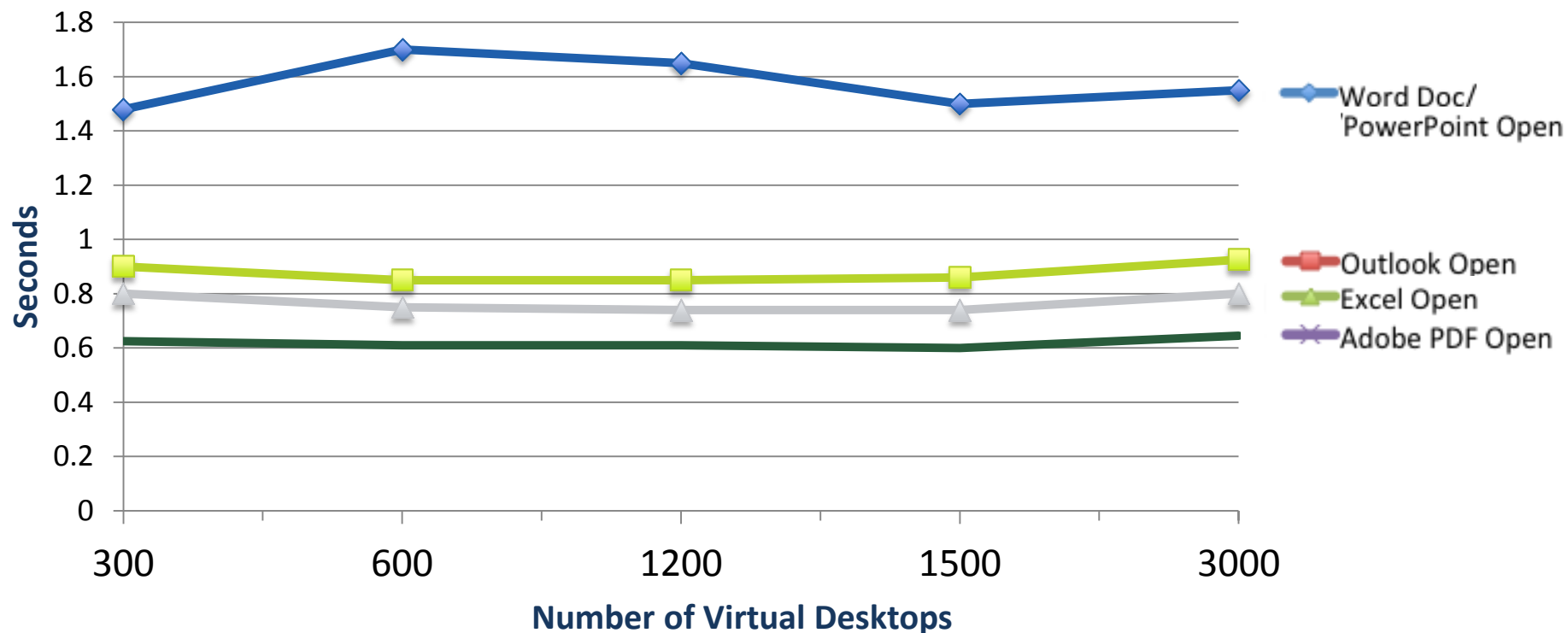
Online Now



Linear Scalability

Predictable performance for 300 to 3000+ desktops

Relative Application Performance



Application response time while incrementally scaling blocks

Web-Scale Is For All Use Cases



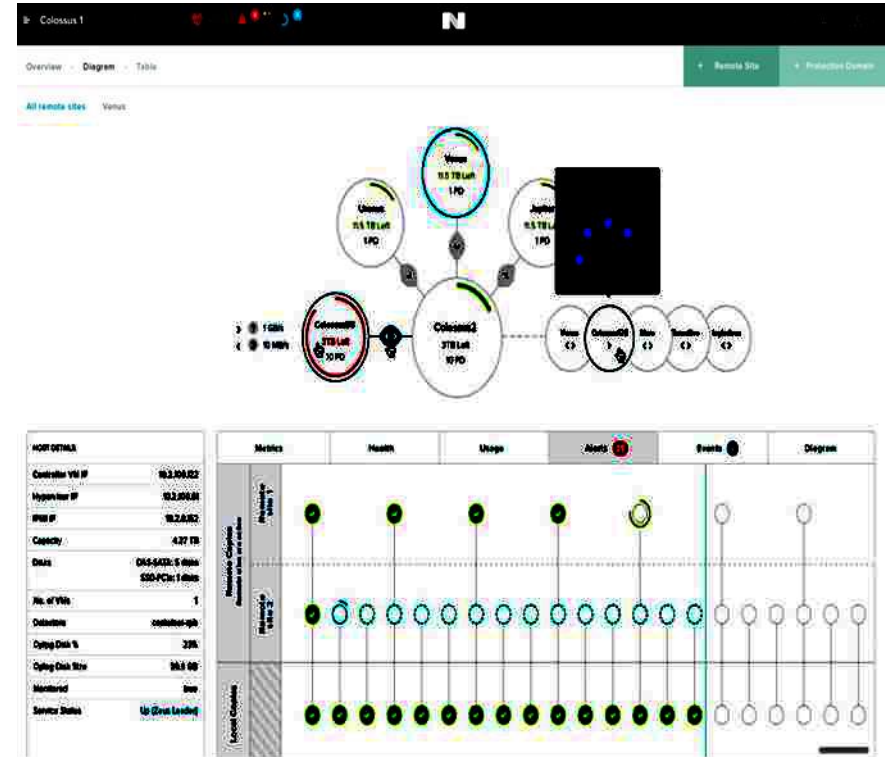
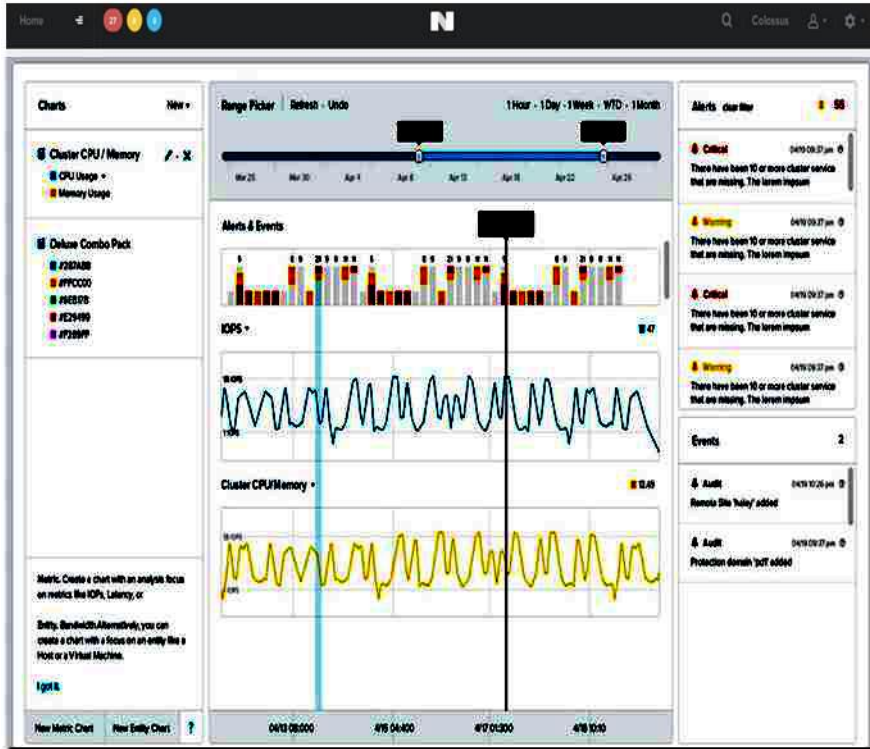
Radically Simplify Deployment



- Portfolio of Turnkey Appliances that Installs In Less Than 30 Minutes
- 100% Software-defined Architecture

- ✓ Rapid Time To Value
- ✓ Flexibility And Choice

Intelligence + Automation thru Analytics Single Pane of Glass



Configuration



Health



Risk



Efficiency



Nutanix Summary

The Best Platform for the Software Defined Data Center



Integrate not just consolidate – reduce cost, footprint, heat, electrical, management, etc.



Gain Resiliency and Linear Scale-Out



Deliver Consistent and Predictable Performance



Gain Flexibility to Adopt a Hypervisor of Choice



Radically Simplify Deployment

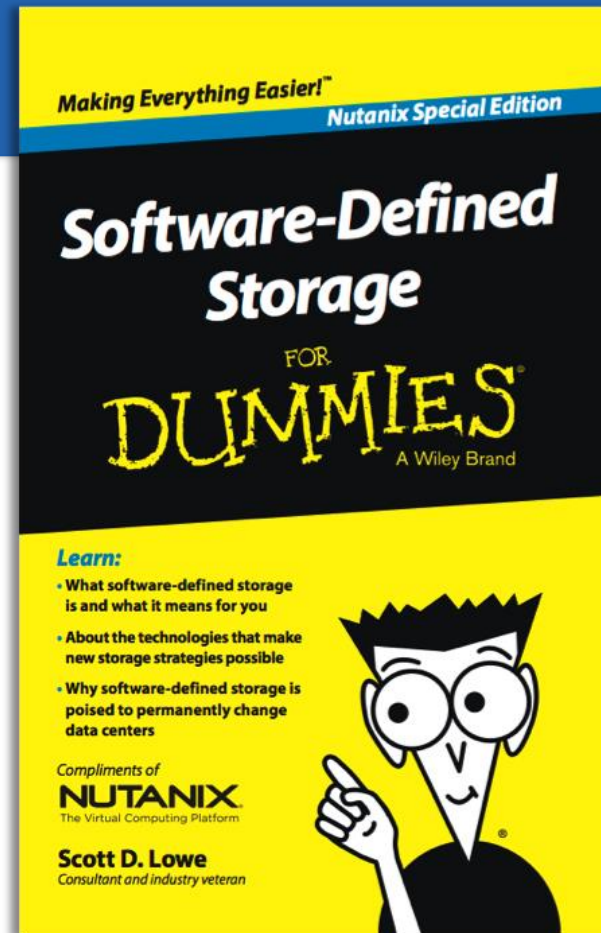


Software-Defined Storage for Dummies

Understanding SDS
FREE DOWNLOAD



www.nutanix.com



NUTANIX®

The Fastest Growing Infrastructure Company of the Last Decade

NUTANIX®

Nutanix Inc.

+852.9198.6525 Mobile

Paul Serrano

Senior Director Marketing, APJ

pserrano@nutanix.com

www.nutanix.com

Twitter: @paul_nutanix